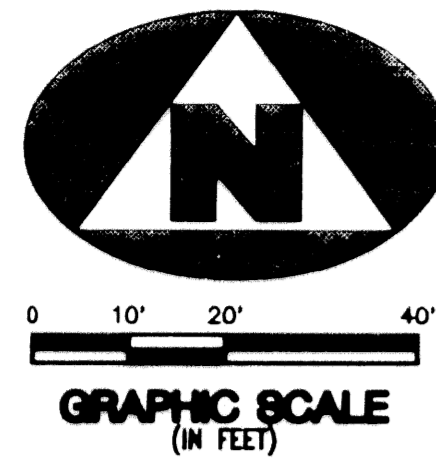
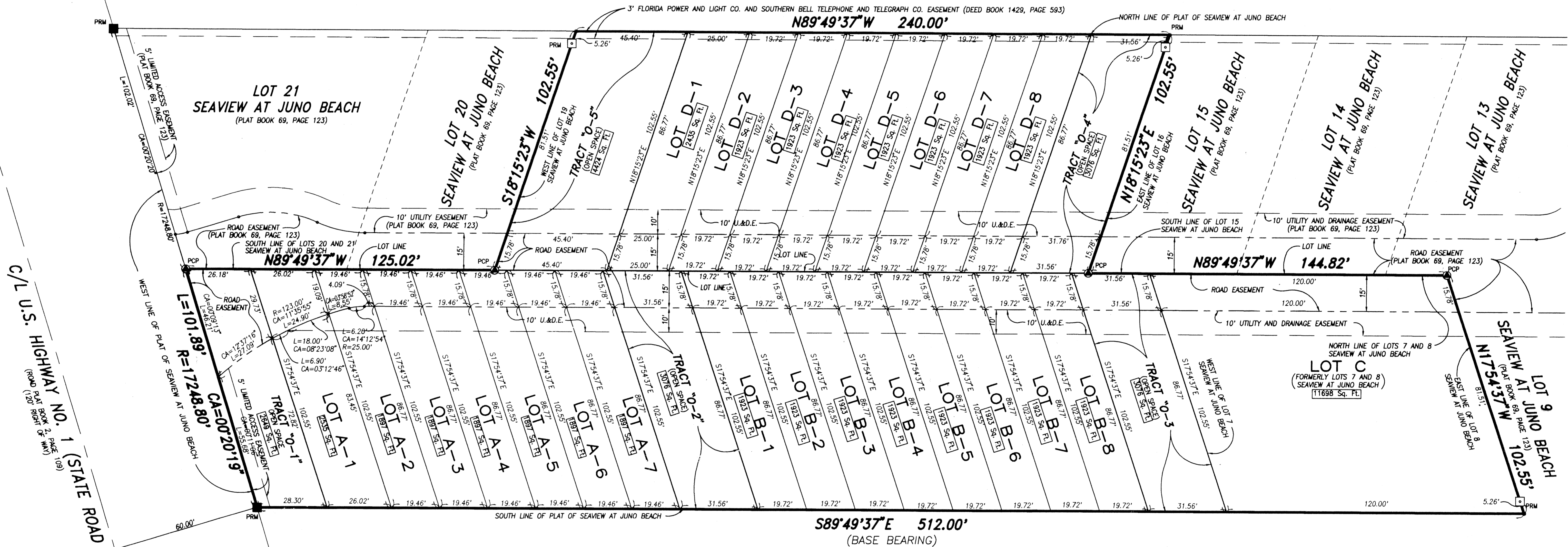


SEAVIEW AT JUNO BEACH PARTIAL RE-PLAT

LYING IN SECTION 21, TOWNSHIP 41 SOUTH, RANGE 43 EAST, TOWN OF JUNO BEACH, AND BEING A RE-PLAT OF LOTS 1 THROUGH 8, INCLUSIVE, AND LOTS 16 THROUGH 19, INCLUSIVE, PLAT OF SEAVIEW AT JUNO BEACH, AS RECORDED IN PLAT BOOK 69, PAGE 123, TOWN OF JUNO BEACH, PALM BEACH COUNTY, FLORIDA



JUNO BEACH PARK
(UNPLATTED)



C/L U.S. HIGHWAY NO. 1 (STATE ROAD NO. 5)

- LEGEND**
- PRM = SET PERMANENT REFERENCE MONUMENT (PRM) NO. 2424
 - PRM = FOUND PERMANENT REFERENCE MONUMENT (PRM)
 - PCP = SET PERMANENT CONTROL POINT (PCP) NO. 2424
 - 1905 Sq. Ft. DENOTES LOT/TRACT AREA IN SQUARE FEET (Sq. Ft.)
 - 10' U.&D.E. DENOTES 10' UTILITY AND DRAINAGE EASEMENT

SUBDIVISION # Seaview at Juno Beach
 BOOK 75 PAGE 8
 FLOOD ZONE
 QUAD #
 SE
 ZIP CODE
 PUD NAME T/Juno Beach.

This instrument was prepared by Wm. R. Van Campen, R.L.S., in and for the offices of Bench Mark Land Surveying & Mapping, Inc., 4152 West Blue Heron Boulevard, Suite 121, Riviera Beach, Florida

BENCH MARK
 Land Surveying and Mapping, Inc.
 4152 West Blue Heron Blvd, Suite 121, Riviera Beach, FL 33404
 Fax (407) 844-8659 Phone (407) 848-2102

RECORD PLAT
SEAVIEW AT JUNO BEACH
PARTIAL RE-PLAT

DWN	DJM	FB	DATE 05/01/95	WO.# P55
CKD	FILE	P55-A.dwg	SCALE 1" = 20'	SHEET 2 OF 2